



THE SQUIRREL CAGE —ALAMO ASHRAE

ASHRAE - ALAMO CHAPTER #65

SAN ANTONIO, TX

ISSUE: APRIL 2011 / VOLUME L NO. 6

ALAMO ASHRAE PRESIDENT'S MESSAGE

When was the last time you:

Updated your profile on the ASHRAE website?

Posted a job using ASHRAEjobs.com? or looked for one if you are unemployed?

Visited the ASHRAE bookstore?

ASHRAE offers a variety of resources to members online. I was recently looking to update the professional library and found 20 ASHRAE publications of interest. They ranged from the usual standards (62.1, 90.1, etc) to the Laboratory Design guide. Did you know ASHRAE has "survivor" guides? Survivor guide topics include design build and contracts. Every year, we as members pay for these resources. Don't forget to take advantage of them.

I'm off to get ready for this weekend's CRC, hope I see you there!

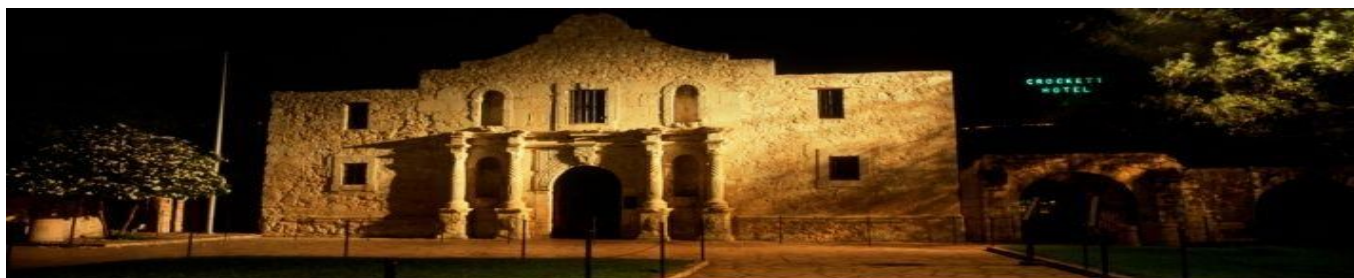
Thank You ,

Chris Garcia, P.E.



INSIDE THIS ISSUE:

PRESIDENT'S MESSAGE	1
MEETING NOTICE	2
OFFICER'S DIRECTORY	3
MEETING ATTENDEES	3
BOG MEETING MINUTES	4
TREASURER'S REPORT	5
ASHRAE GOLF TOURNEY	5
ASHRAE CHAPTER AWARDS	6
CORNER OF HISTORY	7
ANNOUNCEMENTS	8



ASHRAE MEETING NOTICE

APRIL 2011



MEETING INFORMATION:

Speaker / Topic: Dave Blackwell / ASHRAE Std. 52.2

Tuesday April 19, 2011
11:30 am—1:00 pm

Oak Hills Country Club
5403 Fredericksburg Road

Cost: \$25.00 with reservation / \$30.00 without
*Vegetarian available by prior request

Please **RSVP** to Rezaur@esaengineers.net
by the Monday before each meeting

What is ASHRAE Standard 52.2?

ASHRAE 52.2 was created to determine air filter efficiency as a function of particle size. The new test method determines the ability of an air filter to remove dust by specific particle sizes ranging from 0.3 to 10 microns. This advancement led to the development of a Minimum Efficiency Reporting Value (MERV) for each filter tested. MERV is a central feature of ASHRAE 52.2 and was intended to replace the average dustspot efficiency in ASHRAE 52.1.



OFFICER'S DIRECTORY—LOCAL CHAPTER

Officers

President

Christopher Garcia, PE
210-573-2713
garciac18@uthscsa.edu

President-Elect

Jennifer King, PE
210-829-0123
jennifer.king@pbk.com

Secretary

Rocky Ormand
210-499-0004
rockyo@texasairsystems.com

Treasurer

Rey Gutierrez, EIT, LEED AP
210-363-1416
rag@gillette-ac.com

Board of Governors

Brian Allerheilgen, PE, LEED AP
210-841-2865
brian.allerheilgen@hdrinc.com

John Ferencak
210-599-6120
jferencak@brandteng.com

Manuel Lizcano, PE
210-732-4440
MFLizcano@lceinc.net

Todd Buck
210-495-8100
tbuck@txap.com

Committee Chairs

Attendance

Rezaur Rahman
210-342-3483
rezaur@esaengineers.net

Awards

David Kam
210-567-0674
kamd@uthscsa.edu

Chapter Technology Transfers

Evan Gerald
210-524-7099
evan.w.gerald@jci.com

Historian

Manuel Lizcano, PE
210-732-4440
MFLizcano@lceinc.net

Membership Promotion

Golda Weir, EIT, CEM
210-335-6708
gweir@bexar.org

Refrigeration Chair

Raul Garcia
(512) 250-0966
raul.garcia@engineeredair.com

Newsletter Editor

Aaron Caldwell
210-516-1784
Aaron.Caldwell@TRANE.COM

Research Promotion

Gene Raanes, PE, CPD
210-406-6326
gene.raanes@jacobs.com

Student Activities

Mario Mijangos
210-599-6120
mmijangos@brandteng.com

Website Editor

Matt Koch, PE, PhD
830-446-1839
mattkoch@scitex.us

Directory

Scott Wells
210-633-0400
scott.wells@opentechcontrols.com

YEA—Young Engineers

Stillman Jordan III, EIT
210-841-2913
Stillman.jordan@hdrinc.com

PREVIOUS MEETING ATTENDEES MARCH 15, 2011

Aaron Caldwell
Alison Gragg
Aldo Reyes
Brian Allerheilgen
Brad Gilbert
Bill Crook
Butch Tarrillion
Bob Schrader
Chip Drewry
Chris Garcia
Claud Kissmann
Clifford Tilbury

Don Barker
Dennis Dalsing
Dick Grant
Dan Nesman
David Pena
Evan Gerald
Frank Painter
Gary Dennis
Gene Raanes
Jamey Barnett
John DiMillo
John Freund

John Faultersack
Jennifer King
Jim Knight
Jeff Neumann
John Weems
Katie Bowen
Kent Rothbauer
Mike Fauver
Manuel Lizcano
Mike Lawlor
Mike Layman
Mark Mattern

Paul Deltz
Raul Garcia
Rey Gutierrez
Robert Hambricht
Rocky Ormand
Rezaur Rahman
Richard Tarrillion
Recharad Weterveld
Stillman Jordan
Stan Rakowitz
Steven Richey
Scott Wunsch

Todd Buck
Toby Troberman
Wes Weissgarber

BOARD OF GOVERNORS MEETING MINUTES—APRIL 5, 2010



04-05-2011 BOG MEETING MINUTES

Attendees: Rocky Ormand, Manuel Lizcano, Rey G., Chris, & Todd Buck

Treasurer's Report:

Rey reported balances

Left message with Susan W. about taxes

CRC 2011: April 14th, 15th, & 16th

Dallas, Texas

Reimburse after convention

Summer Meeting 2012

Mark Picket

Needs to present hotel proposals to National

Student Activities

Scholarships: Awarded, students notified?

Inviting to next meeting

Research Promotion

Golf Tournament – Todd & Rocky

Updates on Sponsorships & teams

Chili Cook-Off – Gene: Time frame April/June

Looking for a venue

Committee: Rey – Chair, Gene – Member, & Gary Miller

Chapter Technology Transfer: Evan G.

4/19/11 – Dave Blackwell – ASHRAE Std. 52.2

5/17/11 – Mike Thompson – Refrigeration

6/21/11 – David Howell – Texas Board of PE's

Historical Committee:

Manuel L. working on display and awards at Regional Level CRC

YEA – Shannon

Wednesday, April 13 – 11:30am – Lion n Rose (Park North) Commissioning

Awards & Honors: David K.

2nd award to promote in the next Newsletter.

Special Reports & Unfinished Business:

GSHP presentation – Trane/Alamo Hosting

New Business

Current PAOE Points – Prepare for CRC

GSHP presentation – Trane/Alamo Hosting

Banners for regular meetings & display – Rey looking at frame

X-Mas Party – Rent A Santa

Adjourn



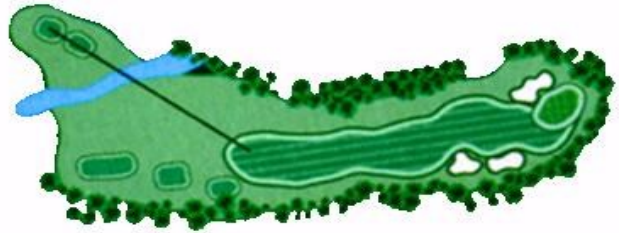
TREASURER'S FINANCIAL REPORT



Treasurer's Report- As reported by Rey Gutierrez	
Checking:	\$7,730.08
Money Market:	\$8,114.18
Petty Cash:	\$200
TOTAL ASSETS:	\$16,044.26
*Special Note: We still have a \$500 credit at Dave and Busters.	



Hole 11
569 Yards
Par 5



Special Reminder: May 13th, 2011 is the Annual ASHRAE Golf Classic date to raise funds for ASHRAE Research and Scholarships. Put this date in your calendars, and get your team signup and sponsorship forms turned in as soon as possible. Team entries are due by May 6th, and payment before April 22nd is appreciated.

SAVE THE DATE...



Alamo ASHRAE Chapter

American Society of Heating, Refrigeration & Air Conditioning Engineers

Proudly Presents

ANNUAL GOLF CLASSIC 2011

When: May 13th, 2011

Start/End Time: 11:30 a.m. to 7:00 p.m.

Where: The Republic Golf Club

4226 SE Military Drive, San Antonio, Texas 78222

ASHRAE AWARDS / RECOGNITION PROGRAM



If you know someone who should be recognized for one of these awards, we encourage you to nominate them. Please contact David Kam @ kamd@uthscsa.edu for more info.

We have many members that have sacrificed their time, shared knowledge and provided their resources to improve our profession, the chapter and the ASHRAE organization. We need to recognize and thank these outstanding members at the local as well as the national level. Below are three awards that I have selected for members of our chapter to pursue.

Please contact me if you meet the criteria for Distinguished Fifty-Year Member Award before April 1st.

For the Exceptional Service Award and Distinguished Service Award, see the attach tally form. If you have a minimum 15 service points please contact me before April 1st. If you have been a chapter president or have served 5 years or more on the board or been part of committee you have a good chance of getting one of these awards.

This is only a small portion of the awards that members of our chapter can be honored for. For more information, please see the ASHRAE AWARDS AND HONORS WEBSITE at:

<http://www.ashrae.org/members/page/1104>

and for more awards: <http://www.ashrae.org/publications/detail/14643>



PERSONAL AWARDS FOR GENERAL SOCIETY ACTIVITIES:

Distinguished Fifty-Year Member Award

This award recognizes individuals who have been ASHRAE members for a minimum of fifty years, and were a past Society President, a Fellow, recipient of the Distinguished Service Award, or otherwise performed outstanding service for the Society. Recognition is in the form of a plaque and lapel pin

Exceptional Service Award

This award recognizes members who have served the Society faithfully and with exemplary effort, far in excess (45 service points) of that required for the Distinguished Service Award (15 service points). The individual must have been a full grade Member for a minimum of ten years and be a past recipient of the Distinguished Service Award. A completed DSA/ESA Point Tally Form (available via the Honors and Awards Web page), current ASHRAE Biographical Record, and digital photo must be submitted with each nomination. Members may be nominated by other members, chapters, regions, committees, or may nominate themselves. Recognition is in the form of a plaque and lapel pin

Distinguished Service Award

This award recognizes members of ASHRAE who have served the Society faithfully and with distinction on committees or otherwise given freely of their time and talent on behalf of the Society (15 service points are required). A completed DSA/ESA Point Tally Form (available via the Honors and Awards Web page), current ASHRAE Biographical Record, and digital photo must be submitted with each nomination. Members may be nominated by other members, chapters, regions, committees, or may nominate themselves. Recognition is in the form of a plaque and lapel pin

Awards are presented at Annual Society Meeting.

"Modeling a Sustainable World"

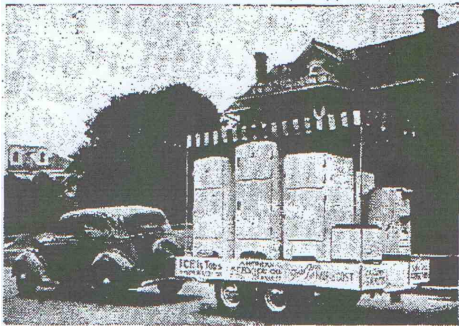


Manuel F. Lizcano, Historian

AC Refrigeration Via Ice

MONDAY MORNING, JUNE 12, 1939

Air Conditioned Refrigeration Via Ice



In the above photo by Studer, is pictured the local modern method used to demonstrate all types and designs of air-conditioned Ice refrigeration to householders. So wholehearted has been the acceptance of Ice as the most dependable

method of complete air-conditioned refrigeration that Increased demonstration facilities are now being constructed by the American Service Company, 226 Rivas Street.

Tested and approved by the Good Housekeeping Institute, "Accent on Ice" by Julia Hoover and Arhur Donniez, feature staff writers of the Institute, is an interesting and Instructive article *In the May, 1939, issue of Good Housekeeping*. It stresses the fact that only by use of Ice can be obtained complete air-conditioned refrigeration for foods. The Olympic and Coolerator air-conditioned refrigerators for domestic use, as well as all makes and designs of ice refrigerators for commercial and industrial use displayed by the American Service Company, 226 Rivas Street, bear the stamp of approval of the nationally recognized National Association Ice Industries.

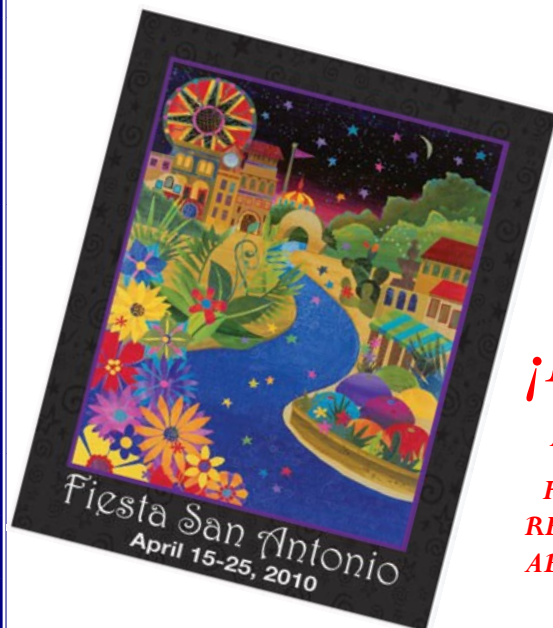
There are six salient factors which definitely establish the superiority of the air-conditioned Ice refrigerators. They are: Far fresher foods! In Coolerator, the patented air-conditioning chamber washes

and circulates the air as it maintains constant cold and balanced humidity. Foods stay fresh longer! Less mingling of odors! No covered dishes necessary. Ice cubes in 6 minutes! The clever Coolerator ice-cuber (at slight additional cost) insures plenty of ice cubes in only five minutes. Crystal-clear, taste-free and hard-frozen ice cubes' Frozen desserts, too! • Coolerator Icy-Chef guarantees delicious, smooth, hard-frozen desserts without the inconvenience of watching or stirring in less than one hour. Stay frozen up to 12 hours for picnics. Safer food protection! Only ice offers these outstanding advantages: Constant cold balanced humidity, ventilated, air conditioned, air-washed cleanliness.

The Rest is History

Credits

"Modeling a Sustainable World" ASHRAE President Lynn G. Bellenger's theme for 20010-11
Article from Page 8 of San Antonio Express 1939



¡FIESTA 2011!

*Alamo ASHRAE Members-
Have a FUN, SAFE, WILD,
RESPONSIBLE, AND ENJOY-
ABLE time at Fiesta this week!*





ALAMO ASHRAE ANNOUNCEMENTS

1. *Internship Opportunities*

Do you need a Summer Intern? Are you looking for a Summer Internship? Please let us know. **CONTACT Chris Garcia @ garcia18@uthscsa.edu**

2. *Alamo ASHRAE Scholarship Winners*

CONGRATULATIONS to **Rosemary Gutierrez & Frederick Lochte** for being selected as the 2011 Alamo ASHRAE scholarship recipients. Congratulations!

1. *Upcoming ASHRAE Presentation (Sponsored By Alamo ASHRAE / Hosted By Trane)*

“Ground Source Heat Pump Systems – Putting the Earth to Work for You.” Registration is open now at www.ashrae.org/ghpwebcast. Please join us as Alamo ASHRAE is hosting this event.

April 21, 2011

12:00 – 3:00 P.M. Central Time

Join us to watch it LIVE @ Trane’s San Antonio Office (9535 Ball Street, Suite 1100).

Please bring your own sack lunch.

Hear from leading experts on how HVAC system and ground characteristics affect ground heat exchanger design, how to enhance ground source heating design system efficiency, and how to avoid design and operations pitfalls. Get the solutions to these topics and more by participating in this **free** webcast sponsored by **ClimateMaster, Mammoth, Taco, the International Ground Source Heat Pump Association, and the ASHRAE Foundation.**

The webcast program has been approved for continuing education credits by the **American Institute of Architects(AIA)** and the **US Green Building Council (USGBC).**